

Let's read

To: Bongji@library.com, jabu@library.com, Ann@library.com, Sam@library.com

From: Jim@school.com

1 September 2015

14:22

Dear Bongji, Ann, Sam and Jabu

I am now living in town. I am so glad that I can use the school computer to send you an e-mail. I miss you all so much.

Town is very busy and there is a lot of traffic. I have started at my new school. It is a very big school. We have nearly 1 000 children. The school is near the park and the swimming pool. In the afternoon I go for swimming lessons. I have a new friend. Her name is Thandi. She is in my class. When I get lost in the school she helps me.

I now live in a block of flats. I live on the 2nd floor. It is very high. We do not have a garden, but we are lucky that we live near the park. I can go and play there with my friends.

I am hoping that I will be chosen for the soccer team and I hope that we can play against your school. I will come and visit you when I visit my grandmother at Christmas time.

Please write back now, I will wait at the computer for your reply.

Bye

Jim

Send



Word work

Read the words and listen to the sounds.  
Then use 5 words to write sentences of your own in your exercise book.



Sight words

buy  
bought  
catch  
caught

near	blow	male	pole	cube
tear	flow	sale	role	tube
clear	grow	whale	whole	cute

Date: \_\_\_\_\_

And, so and because are conjunctions. We use them to join sentences.



Let's write

Join each pair of sentences using one of these conjunctions.

and

because

so

There are many people living in town.      There is a lot of traffic.

There are many people living in town so there is a lot of traffic.

Many people don't have gardens.      They live in flats.

Many people don't have gardens because they live in flats.

Jim lives near to his school.      He can walk to school.

Jim lives near to his school so he can walk to school.

There is a swimming pool near his school.      He goes for swimming lessons.

There is a swimming pool near his school and he goes for swimming lessons.

Jim keeps getting lost.      There are lots of streets.

Jim keeps getting lost because there are lots of streets.

We do not have a garden to play in.      I play in the park.

We do not have a garden to play in so I play in the park.



Let's write

Find the antonym (or opposite) of each word in bold and write it in the space.

far

narrow

buy

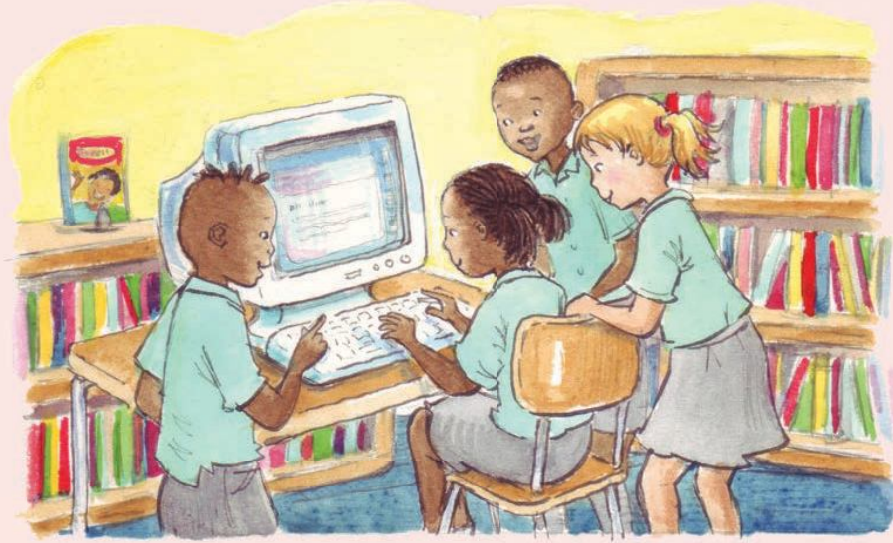
noisy

short

Do you remember what a synonym is? It's a word that has the same meaning as another word. An antonym is a word that means the opposite of another word.

The school is near.	far
They sell sweets.	buy
The river is broad.	narrow
It takes a long time to walk to school.	short
It is very quiet in the city at night.	noisy

TEACHER: Sign \_\_\_\_\_ Date \_\_\_\_\_



Let's read

To: Jim@school.com

From: Bongji@library.com

1 September 2015

14:45

Dear Jim

Wow, we just got your email. We are all using the computer in the library.

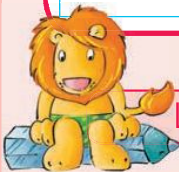
We miss you too. You are in a very big school. So you are learning to swim. That is so cool. We hope we can come and visit you and see your school.

Maybe we can see you before Christmas.

Bye

Bongji, Sam, Ann and Jabu

Send



Let's write

Answer these questions.

Who wrote back?	Bongji
On what date did she write back?	1 September 2015
At what time did she write back?	14:45
Where were the children sitting?	In the library

Date: \_\_\_\_\_



Let's write

Use these action words (verbs) to complete these sentences. Then say if the sentence is in the present tense or the past tense.



<div style="border: 1px solid black; border-radius: 10px; padding: 2px; display: inline-block; background-color: #ADD8E6;">moved</div> <div style="border: 1px solid black; border-radius: 10px; padding: 2px; display: inline-block; background-color: #FFDAB9;">moves</div>	Jim moves to town.	present
	Last month Jim <u>moved</u> to town.	past
<div style="border: 1px solid black; border-radius: 10px; padding: 2px; display: inline-block; background-color: #FFDAB9;">eats</div> <div style="border: 1px solid black; border-radius: 10px; padding: 2px; display: inline-block; background-color: #ADD8E6;">ate</div>	Jim <u>eats</u> his lunch.	present
	Yesterday he <u>ate</u> at home.	past
<div style="border: 1px solid black; border-radius: 10px; padding: 2px; display: inline-block; background-color: #FFDAB9;">walked</div> <div style="border: 1px solid black; border-radius: 10px; padding: 2px; display: inline-block; background-color: #FFFF00;">walks</div>	He <u>walks</u> to school.	present
	Yesterday Jim <u>walked</u> to school.	past
<div style="border: 1px solid black; border-radius: 10px; padding: 2px; display: inline-block; background-color: #90EE90;">picked</div> <div style="border: 1px solid black; border-radius: 10px; padding: 2px; display: inline-block; background-color: #DDA0DD;">picks</div>	Thandi <u>picks</u> up the book.	present
	Yesterday Thandi <u>picked</u> up the book.	past



Fun

Fill these prepositions into the word grid. Count the letters in each word to help you find the correct space for each one.

a	l	o	n	g	s	i	d	e		
b							u			
o	n						r			
v							i	n	t	o
b	e	t	w	e	e	n	n			
							g			

during

alongside

above

on

into

between

TEACHER: Sign \_\_\_\_\_

Date \_\_\_\_\_



# Giving directions



Let's read

Look at the map and then answer the questions.



	A	B	C	D
6	<p>post office</p>	<p>First Avenue</p>	<p>Second Avenue</p>	<p>Third Avenue</p>
	Mandela Road			
5	<p>railway station</p>	<p>parking</p>		<p>police station</p>
	Railway Road			
4		<p>church</p>	<p>park</p>	<p>crèche</p>
	Church Street			
3	<p>supermarket</p>		<p>school</p>	
	Rose Road			
2		<p>hospital</p>		<p>garage</p>
	Flower Street			
1	<p>market</p>		<p>internet cafe</p>	<p>factory</p>

Date: \_\_\_\_\_

Sight words

bite  
bit  
blow  
blew



Let's write

Look at the map and then fill in the answers to these questions.

In which street is the school?	Rose Road / Church Road
On which corner is the supermarket?	Rose Road and First Avenue
In which street is the hospital entrance?	Flower Street
Which places are safe for children to play?	Park, creche and school
What places are noisy?	Railway station, market and factory
What places are unsafe for playing?	Parking, market, factory, airport, post office,

railway station, police station, supermarket and hospital.

Let's write



Write directions from the school to the post office.

Own answer

Write directions from the hospital to the school.

Own answer

Write directions from the school to the garage.

Own answer



Fun

What do these signs mean?



School Ahead

Danger (High Voltage)



Left Turn Ahead



TEACHER: Sign

Date