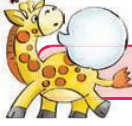


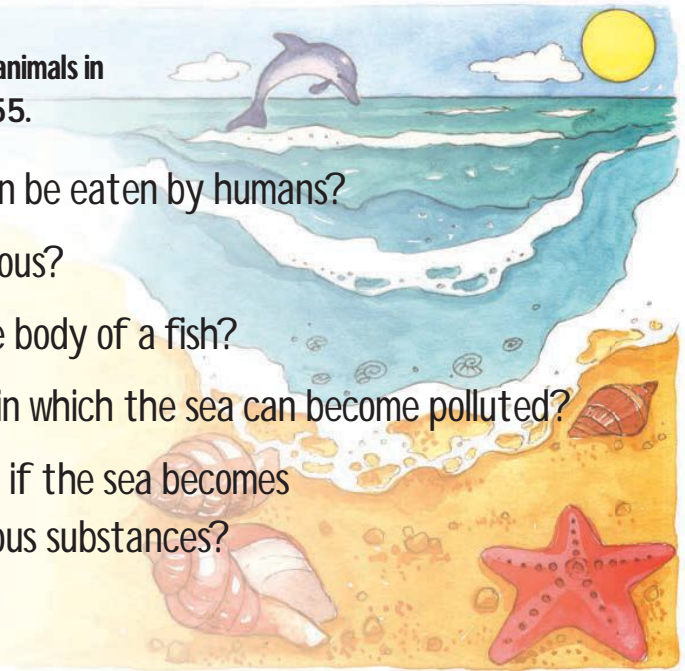
Animal craft



Let's talk

Talk about all the sea animals in the pictures on page 55.

- Which of these sea animals can be eaten by humans?
- Which sea animals are dangerous?
- What covers and protects the body of a fish?
- What are the different ways in which the sea can become polluted?
- What do you think will happen if the sea becomes polluted with refuse or poisonous substances?



Let's write

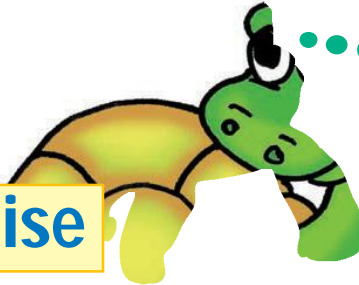
Write the names of animals you can think of that live in rivers, dams or the sea in the three columns of the table.

River	Sea	Dam
fish	fish	fish
crocodile	octopus	frog
turtle	crab	crab
otter	shark	water snakes
	dolphin	
	turtle	

Animals that carry their homes with them



Let's read



Did you know? I fit neatly into my shell, and it never becomes too small for me.

The tortoise

The tortoise is a reptile with four scaly legs and a wrinkly neck and head. It moves around slowly with its shell house on its back.

Where do they live?



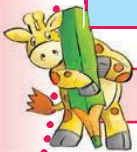
Turtle:
I live in the sea.



Terrapin: I live in fresh water in the wetlands.



Tortoise: I live on land.



Let's write Answer these questions about the tortoise that lives on land.

Is the tortoise's shell hard or soft? hard

What does the tortoise's shell protect it against? Its shell protects it from danger or predators (animals that hunt them).

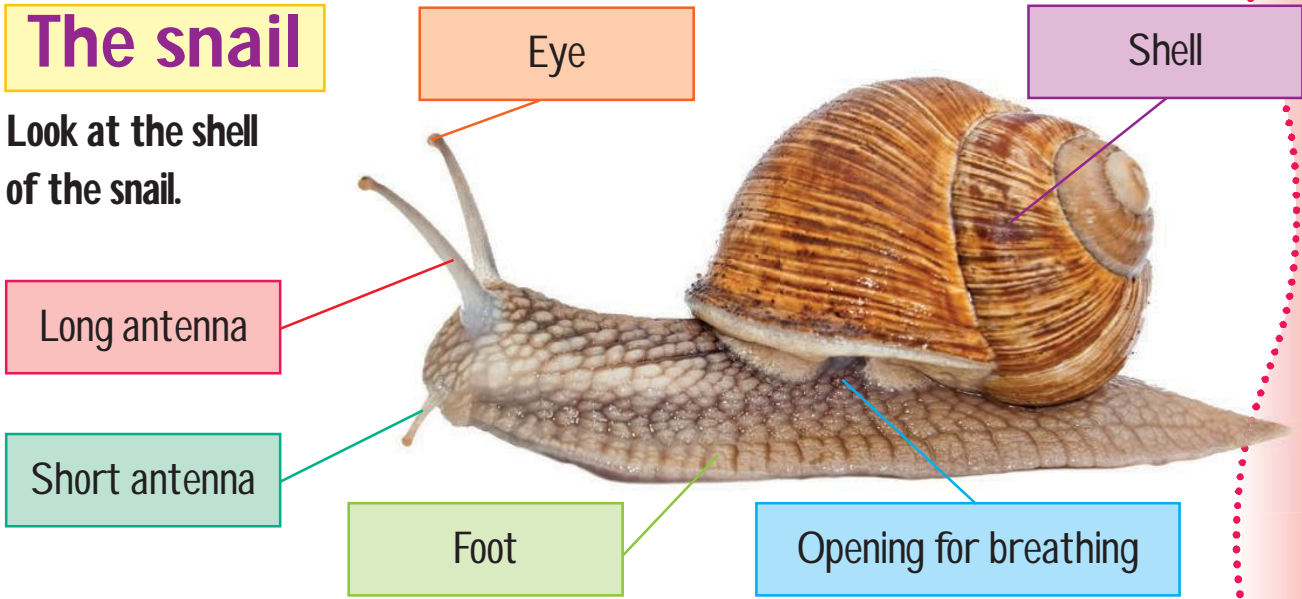
What does a tortoise do when it is scared? It hides inside its shell.

What food do tortoises eat? grass, plants and vegetables. They are herbivores (animals that do not eat meat).

Date:

The snail

Look at the shell of the snail.



How does a snail move along? On its foot.

Have you ever found an empty snail shell? What do you think happened to the snail? Yes/No. The snail has died or been eaten by another animal.

What colour are snail's shells? Usually brown and white or cream.

Why do you think snails have shells? To protect their soft bodies.



Let's write

Where do you think I live? Next to my picture, write whether I make my home in a **tree**, in the **ground** or in **water**.

A collection of animal illustrations with handwritten labels in boxes indicating their habitats:

- Frog: water/ground/tree
- Pigeon: tree
- Squirrel: ground
- Crab: water
- Snake: ground/tree
- Worms: ground
- Clownfish: water
- Snail: ground

Teacher: _____
 Sign: _____
 Date:

Date:

Ants

Ants build different kinds of shelter in their environment. A tiny ant can carry something that is four times heavier than itself. Ants communicate with each other. They warn each other if there is danger, and they tell each other where to find food.



Let's write

Why do you think ants build themselves shelters? To live in, to protect themselves from harm or from bad weather.

Who is an enemy of the ant? Anteaters, spiders, beetles, caterpillars, birds and lizards.

What materials do ants use to build their shelters? Sand, clay and tiny bits leaves and sticks.



Let's read

Birds

Birds build nests as shelters and to have a place where they can lay their eggs. The size of a nest depends on the size of the bird.

What do birds use to build their nests?

Grass, twigs, leaves and sticks.

Which animal is a bird's enemy?

A cat.

