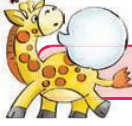


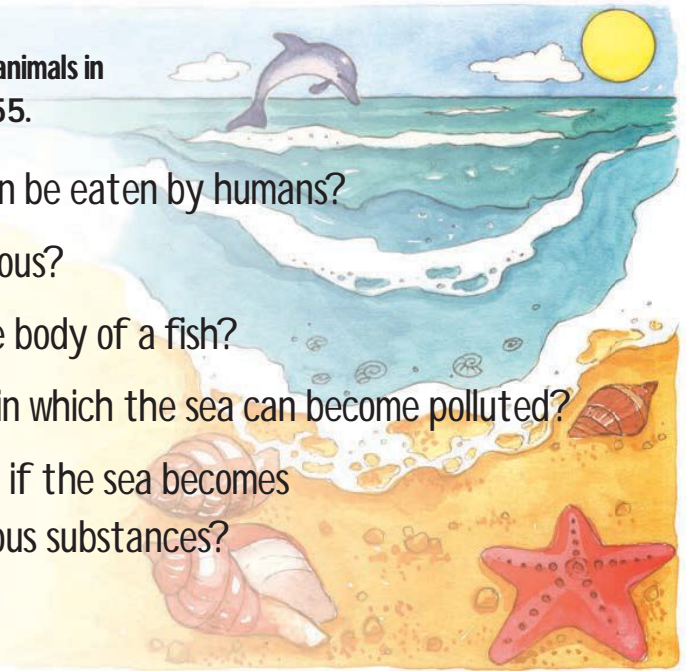
# Animal craft



**Let's talk**

Talk about all the sea animals in the pictures on page 55.

- Which of these sea animals can be eaten by humans?
- Which sea animals are dangerous?
- What covers and protects the body of a fish?
- What are the different ways in which the sea can become polluted?
- What do you think will happen if the sea becomes polluted with refuse or poisonous substances?



**Let's write**

Write the names of animals you can think of that live in rivers, dams or the sea in the three columns of the table.

River	Sea	Dam



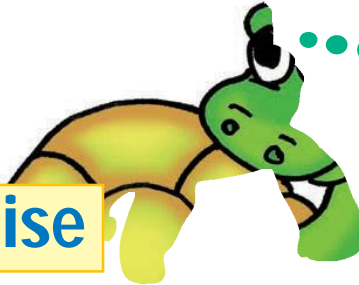
30

# Animals that carry their homes with them

Worksheet  
Term 2 - Week 7



Let's read



Did you know? I fit neatly into my shell, and it never becomes too small for me.

## The tortoise

The tortoise is a reptile with four scaly legs and a wrinkly neck and head. It moves around slowly with its shell house on its back.

### Where do they live?



**Turtle:**  
I live in the sea.



**Terrapin:** I live in fresh water in the wetlands.



**Tortoise:** I live on land.



Let's write Answer these questions about the tortoise that lives on land.

Is the tortoise's shell hard or soft? \_\_\_\_\_

What does the tortoise's shell protect it against? \_\_\_\_\_

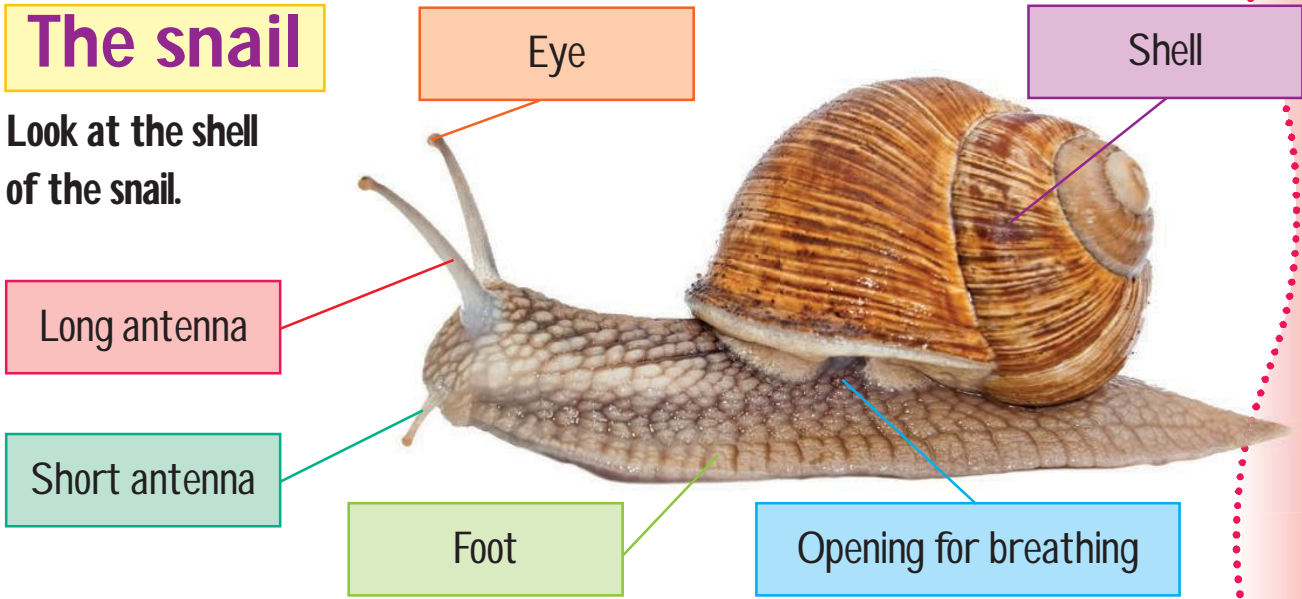
What does a tortoise do when it is scared? \_\_\_\_\_

What food do tortoises eat? \_\_\_\_\_

Date: .....

# The snail

Look at the shell of the snail.



How does a snail move along? \_\_\_\_\_

Have you ever found an empty snail shell? What do you think happened to the snail? \_\_\_\_\_

What colour are snail's shells? \_\_\_\_\_

Why do you think snails have shells? \_\_\_\_\_



**Let's write** Where do you think I live? Next to my picture, write whether I make my home in a **tree**, in the **ground** or in **water**.

A collection of animal illustrations with empty boxes for answers:

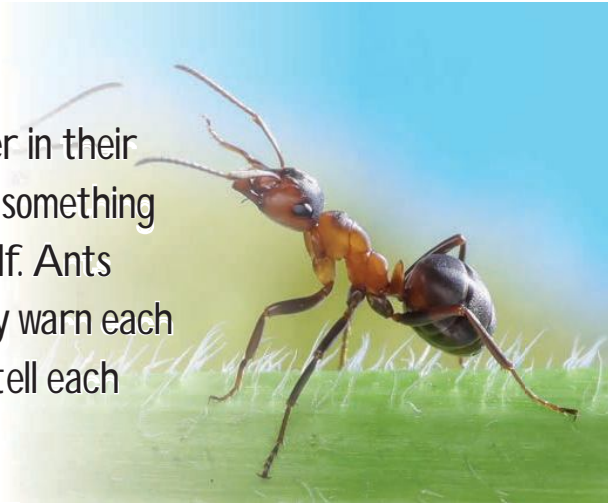
- Green frog:
- Pigeon:
- Squirrel:
- Crab:
- Snake:
- Worms:
- Clownfish:
- Snail:



Date: .....

## Ants

Ants build different kinds of shelter in their environment. A tiny ant can carry something that is four times heavier than itself. Ants communicate with each other. They warn each other if there is danger, and they tell each other where to find food.



Let's write

Why do you think ants build themselves shelters? \_\_\_\_\_

Who is an enemy of the ant? \_\_\_\_\_

What materials do ants use to build their shelters? \_\_\_\_\_



Let's read

## Birds

Birds build nests as shelters and to have a place where they can lay their eggs. The size of a nest depends on the size of the bird.

What do birds use to build their nests?

\_\_\_\_\_

Which animal is a bird's enemy?

\_\_\_\_\_

